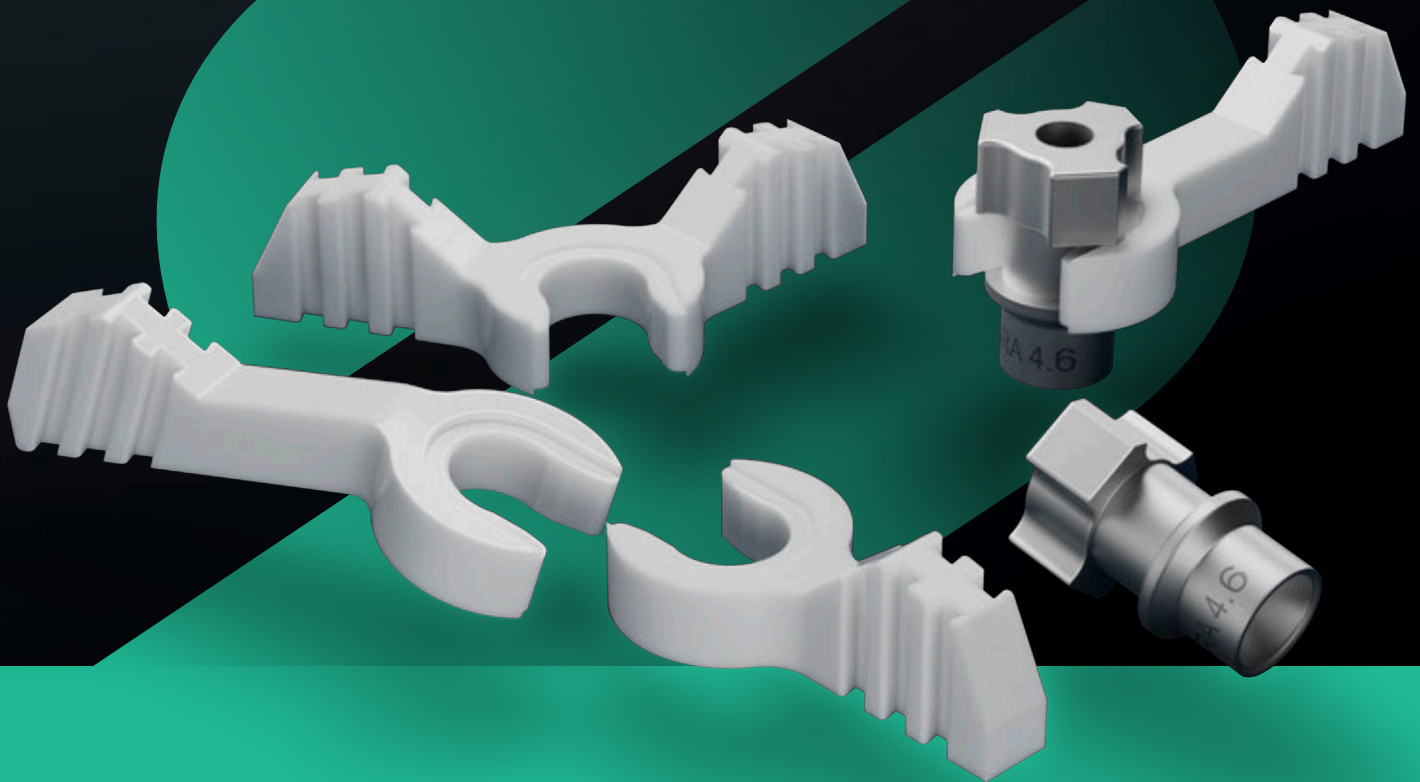


STRAUMANN EXACT™

A perfect match for
inhouse workflows.



A LANDMARK IN DIGITAL DENTISTRY

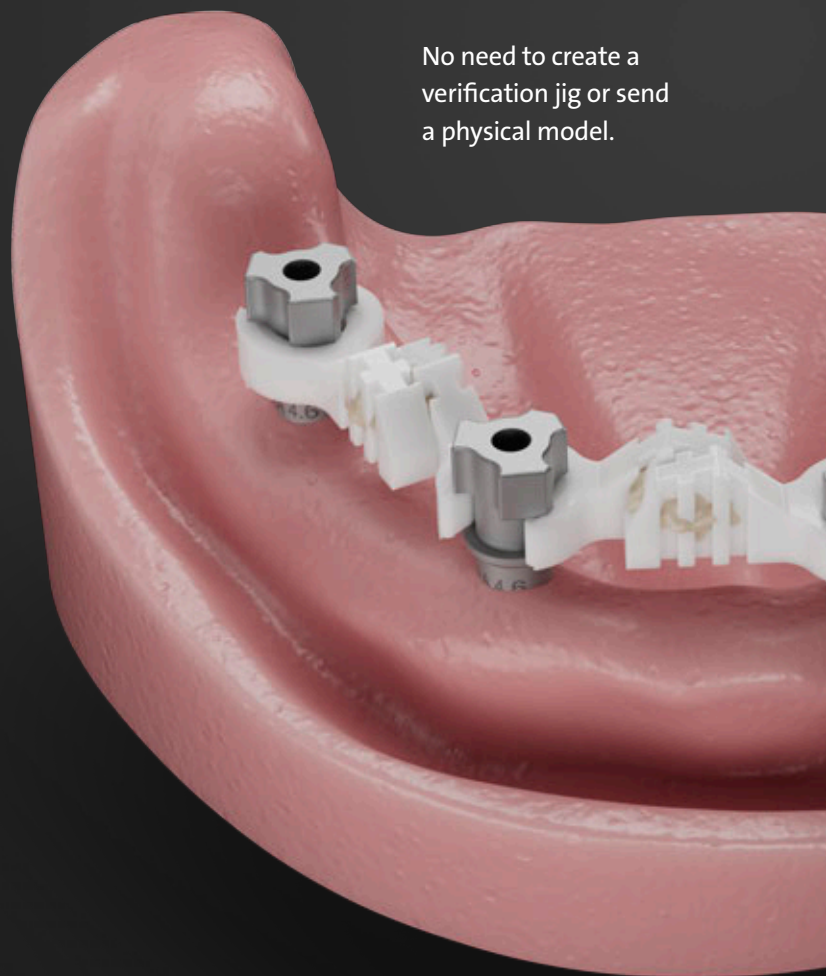
DIGITAL FULL-ARCH FROM TEMPORARY TO FINAL RESTORATION

Our goal is to increase efficiency and accuracy for faster time to teeth while minimizing capital investments giving access to fixed full-arch treatment.

Seamlessly integrated with Straumann SIRIOS™, Straumann EXACT™ enhances accuracy, efficiency, and flexibility for clinicians and labs, making digital full-arch workflows accessible without the high capital investment of photogrammetry.



Fig 1: First, the Straumann EXACT™ scanbody BASEs are screwed to the SRAs. Then LINKS should be selected to create the best fit to the abutment positions and anatomy. This results in a rigid scanning bridge which allows the accurate verification of the abutment position.



No need to create a verification jig or send a physical model.



SPEED

Eliminates the need for labor-intensive steps like creating a verification jig and backpouring a model, enabling a fully digital, temporary to final workflow.



ACCURACY

Physical connections between scanbodies drastically improve IOS accuracy and enhance precision for full-arch scanning, overcoming the limitations of traditional scanbodies.



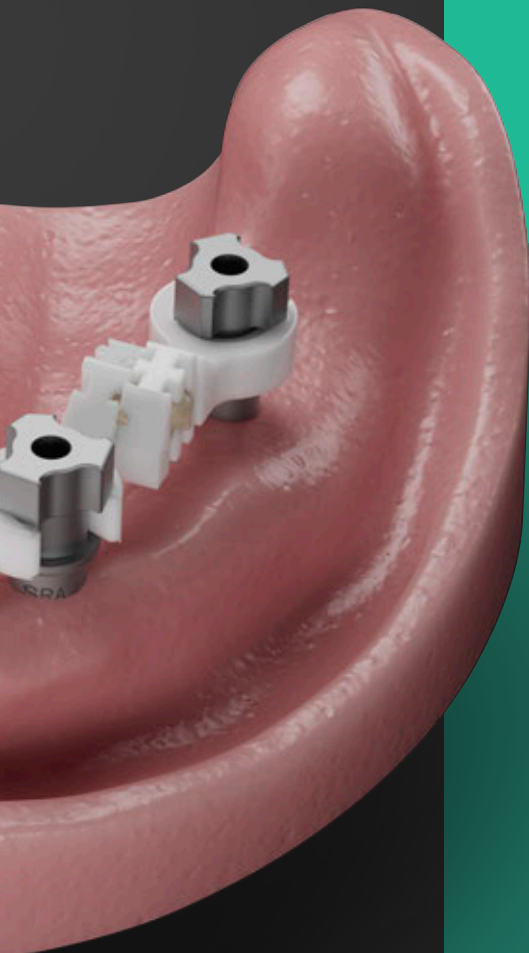
COST-EFFECTIVE

Provides a highly accurate alternative to photogrammetry systems without the prohibitive capital investment.



FLEXIBILITY

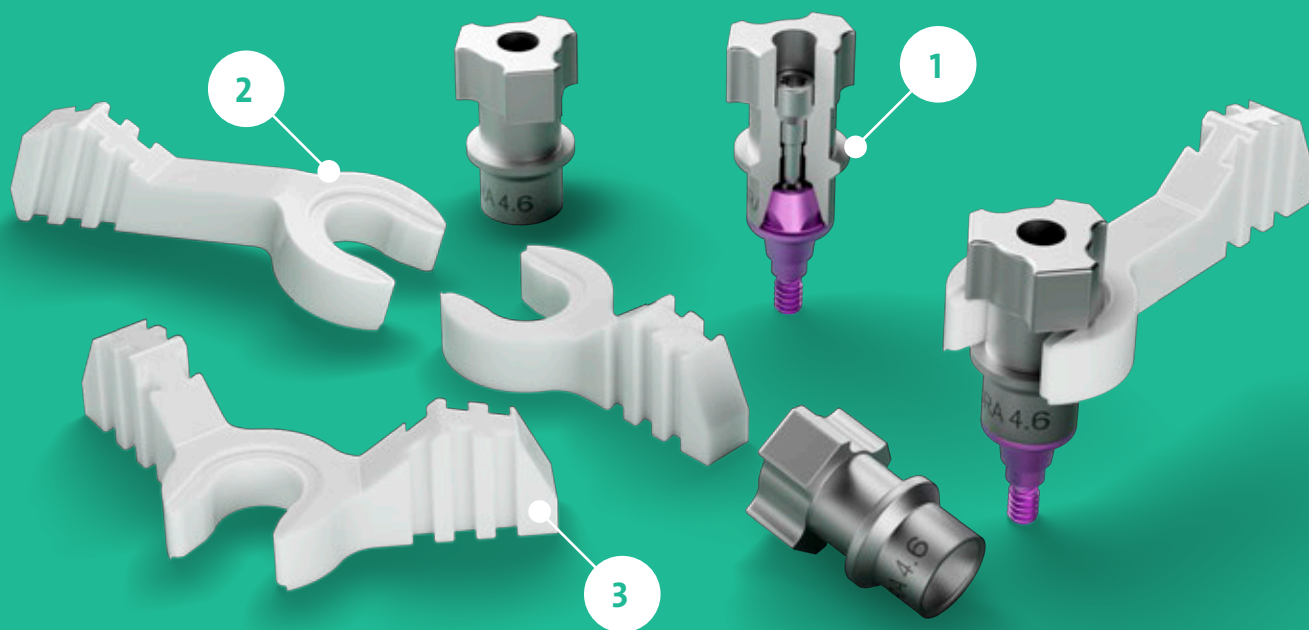
Supports collaboration with the preferred lab partner, empowering clinicians with greater control and freedom of choice.



Straumann EXACT™ enables a seamless, cost-effective, accurate, fully digital, treatment workflow for full-arch restorations. Traditional scanbodies fall short in accuracy due to insufficient landmarks for precise stitching. By combining 'BASE' scanbodies with connecting 'LINKS', the system enables precise and cost-effective edentulous scanning, while avoiding analog steps.

DEVELOPED WITH PRECISION AND USABILITY IN MIND

Straumann EXACT™ is the result of in-depth research and development, with over 50 prototypes evaluated across over a 1,000 scans to optimize accuracy and usability.



Product name		Article number	Description
Scanbody/BASE		025.0084	for Straumann® SRA 4.6
LINKS		025.0086V4	Long LINK
		025.0087V4	Short LINK
		025.0088V4	V-Shape LINK
		025.0089V4	Angled LINK

1 DESIGNED FOR PRECISION

Non-symmetrical, non-congruent BASE shapes improve scanning accuracy, while a direct seat on the screw-retained abutment ensures tighter tolerances and reliable results. Pre-defined notches minimize vertical movement, helping to reduce scan distortions and maintain accuracy.

2 EASE OF USE

The straightforward snap-on design provides tactile and optical feedback, helping to ensure links are securely positioned time after time.

3 VERSATILE CLINICAL APPLICATIONS

- **Simultaneous soft tissue capture** streamlines workflows by eliminating the need for an additional scan step
- **Specialized LINK geometry** is designed to perform effectively in mandibular cases, avoiding interference from the tongue
- **Rotatable LINKS** allow for precise bonding positions suited to each case
- **Four LINK geometries** accommodate a range of clinical scenarios, including cases with fully edentulous patients



SHORTEN YOUR PATH TO A PASSIVE-FITTING PROSTHESIS

SCAN



UNLOCK THE FULL POTENTIAL OF YOUR IOS

Patients increasingly expect a seamless, enhanced digital experience. They believe it's important for dentists to use digital technology and prefer digital impressions over traditional methods for greater comfort and convenience.

Our scanbody system, Straumann EXACT™, enables you to use existing IOS for full-arch cases, streamlining your workflow and enhancing your capabilities.

Gain access to an even superior user experience with our Straumann SIRIOS™. With a dedicated workflow, it delivers highly accurate full-arch implant restorations – all within a single scanning case.

MATCH



SEAMLESSLY SHARE ACCURATE SCANS WITH YOUR PREFERRED LAB

Send your Straumann EXACT™ scans to the lab partner of your choice, giving you the freedom to work with your trusted provider for final restorations.

With Straumann EXACT™, you can count on precision: achieve accuracy averaging 22 µm, well within the 50 µm threshold supported by clinical evidence for delivering passive-fitting prostheses.

Reduce chair time and number of patient visits for faster time to teeth.



DESIGN



FULLY DIGITAL

Digitally design the final titanium bar substructure directly on the Screw-Retained Abutments. Integrating the zirconia sleeve into the design ensures a precise fit and seamless connection with the final restoration.

Bar substructures that seat directly to abutments enable model-free workflows and deliver exceptional accuracy and efficiency.

RESTORE



TITANIUM BAR RESTORATIONS

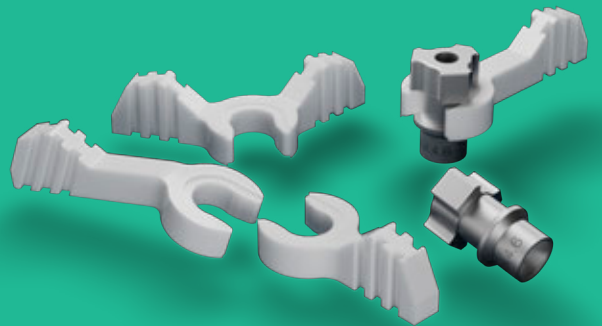
Bar-supported zirconia restorations offer significant advantages over full-contour zirconia alternatives:

- Improved patient comfort – Lighter design enhances the overall experience
- Reliable bonding – Increased surface area reduces the risk of debonding
- Superior support – Optimized force distribution outperforms traditional coping designs
- Fully digital-ready – No physical model required for fabrication

Eliminate the need for an additional visit to verify impressions.

STRAUMANN EXACT™ – A PERFECT MATCH.

- Speed: eliminates the need for labor-intensive steps like creating a verification jig and backpouring a model, enabling a fully digital, end-to-end workflow
- Accuracy: physical connections between scanbodies drastically improve IOS accuracy and enhance precision for full-arch scanning
- Cost-effective: provides a highly accurate alternative to photogrammetry systems without the prohibitive capital investment
- Flexibility: supports collaboration with the preferred lab partner, empowering clinicians with freedom of choice



491.063/en/A/00 08/25

International Headquarters

Institut Straumann AG
Peter Merian-Weg 12
CH-4002 Basel, Switzerland
Phone +41 (0)61 965 11 11
Fax +41 (0)61 965 11 01
www.straumann.com

© Institut Straumann AG, 2025. All rights reserved.
Straumann® and/or other trademarks and logos from Straumann® mentioned herein are the trademarks or registered trademarks of Straumann Holding AG and/or its affiliates.

 **straumann**