

STRAUMANN iGUIDE™

Confidence through guidance.



CONFIDENCE THROUGH GUIDANCE

Straumann iGuide™ is the guided system for the Straumann iEXCEL™ implant line.

Bring your prosthetic-driven plans to life with accuracy and confidence. Streamline your workflow with a straightforward, intuitive system—and integrate seamlessly with Straumann iEXCEL™ for true versatility, simplicity, and connected dentistry. Because when accuracy meets confidence, your patients benefit first.

WHY GUIDED?

Static fully guided surgery helps to translate virtual implant planning to clinical execution. Compared to free-hand surgery, it demonstrates superior accuracy, with minimal deviations in implant positioning. It also enhances the reproducibility and predictability of implant placement outcomes, minimizing variability across different operators and cases.¹⁻⁷

Depending on your level of expertise, you can accelerate your learning, and as a seasoned surgeon, use it as a boost.





"I believe in greater accuracy, speed, and control through advanced workflows."

Straumann iGuide™ is your fully connected precision layer: from scan to plan to guided placement, double tip-and-sleeve control with intuitive sequencing delivers fast, accurate, traceable execution within the Straumann® digital ecosystem.

SEAMLESS INTEGRATION WITH STRAUMANN iEXCEL™

- Clinical versatility: Four implant designs. One system.
- Simplicity: One TorcFit™ connection for all four implant designs
- Connected dentistry: Full integration into the digital ecosystem

STRAIGHTFORWARD AND INTUITIVE SYSTEM

- One hand surgery
- Sequential drilling and double guidance of tip and sleeve
- Drill sequence with pictograms and color-coded workflows

PROSTHETIC-DRIVEN CONFIDENCE

- Digital workflow designed to reduce the risk of harm for the patient⁸
- Digital pre-operative planning executed guided increases predictability^{2-4*}

* Compared to freehand surgery

PRECISION MADE EASY

One surgical system with a unified workflow, Straumann iGuide™ enables fully guided placement of all four Straumann iEXCEL™ implant lines.

1 COLOR-CODED WORKFLOW

Pictograms and color-coded drills enable easy recognition and an intuitive drill sequencing.

2 ONE-HANDED CONTROL

Cylindrical guidance with vertical stop. The instruments require no handles, allowing for one-hand surgery.

3 LASER MARKINGS

Laser-engraved identification for quick and reliable instrument recognition.

4 ONE KIT FOR FOUR IMPLANT LINES

Perform guided procedures for all Straumann iEXCEL™ implant lines (BLC, BLX, TLC, TLX) with one kit.

5 DOUBLE GUIDANCE

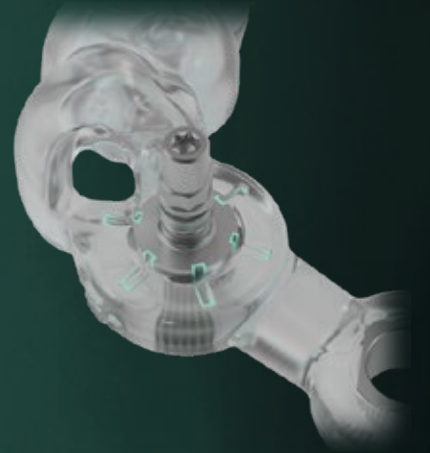
Double guidance of tip and sleeve provide high accuracy when preparing an osteotomy.





SCREW-RETAINED IMPLANT DRIVER

→ Provides a stable, screw-retained connection between driver and implant for controlled placement. After insertion, the connection can be maintained to support secure guide fixation.



PREDICTABLE PROSTHETIC POSITION

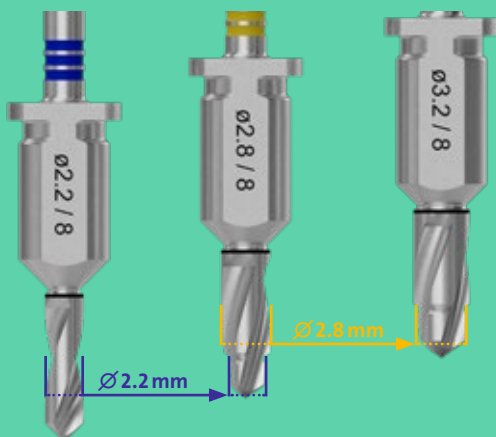
→ Physical stops and reference marks on the guide and Straumann iGuide™ Implant Drivers are designed to increase the predictability of the final implant position*.

UNIQUE IGUIDE METAL SLEEVES

→ One sleeve height available in $\varnothing 3.9$ mm and $\varnothing 5.2$ mm for a versatile but straightforward, guided workflow.



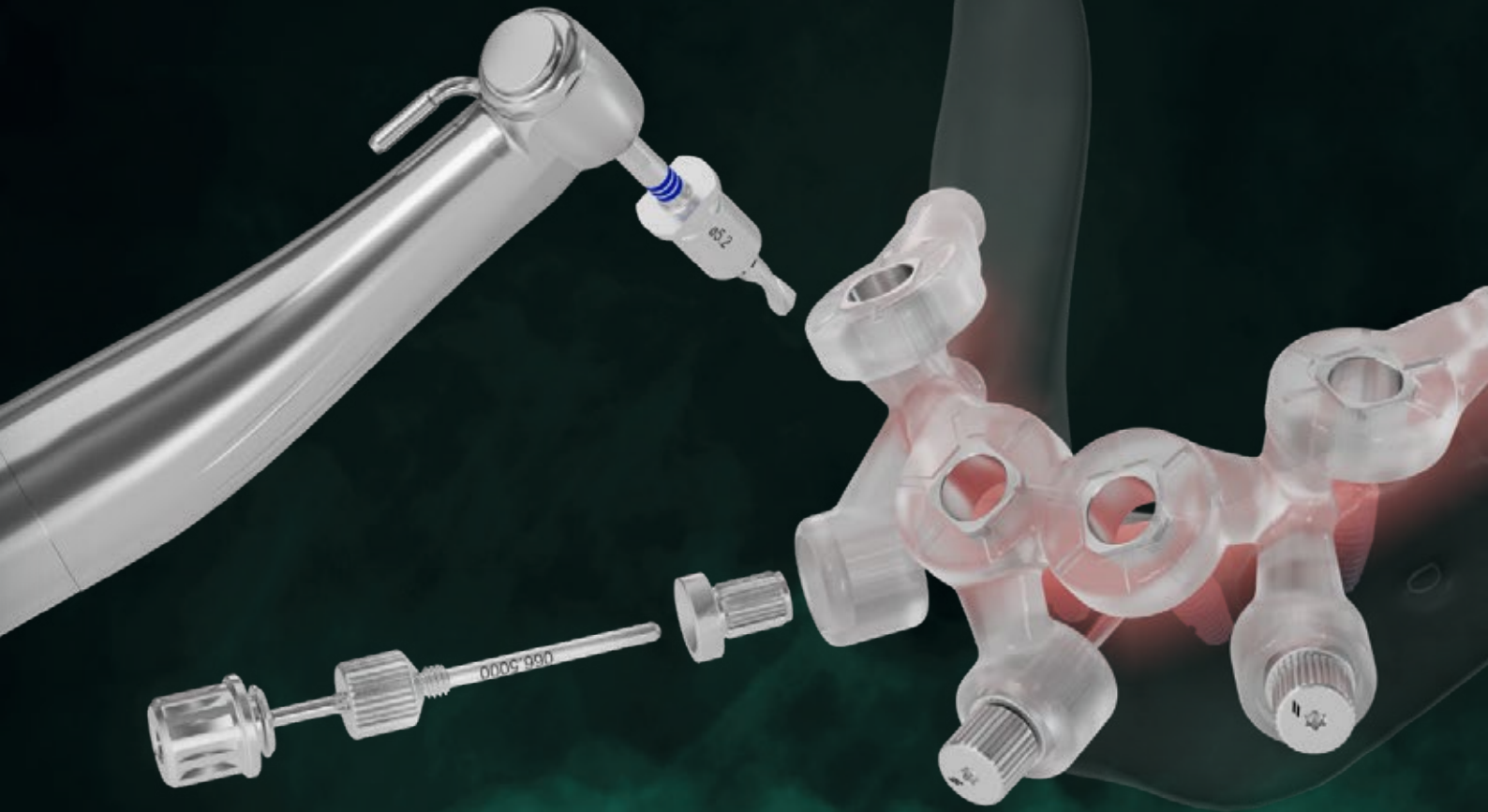
SEQUENTIAL DRILLING WITH DOUBLE GUIDANCE PRECISION



→ Each drill tip follows the diameter of the previous preparation, engaging the existing osteotomy while the sleeve provides additional lateral control. This dual guidance of tip and sleeve ensures maintained accuracy and stability, even in deep preparations.

*compared to freehand surgery

ONE-HAND SURGERY



From single-tooth indications to full-arch rehabilitation, Straumann iGuide™ fixation pins provide the stability you need to reliably transfer digital pre-operative planning into clinical reality. By securing the guide precisely in position, Straumann iGuide™ supports accurate implant placement and predictable execution of the presurgical implant plan compared to freehand surgery.

The fixation pins feature an SCS screwdriver interface and threaded sleeve connection, ensuring secure engagement and controlled fixation throughout the procedure.



STRAUMANN® MODULAR CASSETTE

Our award-winning Modular Cassette is a customizable instrument cassette designed to blend into your clinic's daily workflow, allowing surgeons and assistants to work together efficiently.

The Straumann® Modular Cassette is a compact instrument set which can be assembled and combined in different ways, allowing you to customize your kit with the tools you need.

- Module A: for universal and prosthetic instruments
- Module B: for workflow and drills – one insert that works with all Straumann iEXCEL™ implants



STRAUMANN PROCLEAN™ CASSETTE

The Straumann ProClean™ Cassette virtually eliminates labor-intensive manual cleaning – simply put the used instruments back into the cassette during operation and let machines⁹ do the rest.

- Uncompromised hygiene: Increased staff safety¹⁰, validated, user friendly design that ensures clean and dry instruments every time.
- Simple workflows: Validated, automated re-processing makes instrument mix-ups a thing of the past.
- Increased productivity: Virtually eliminates labor-intensive manual cleaning. Free up more time for value-added clinical activities.

STRAIGHTFORWARD AND INTUITIVE SYSTEM

Drilling sequence with pictograms and color-coded workflows.

STRAUMANN iGUIDE™ T-SLEEVE Ø 3.9 MM, HEIGHT 5 MM

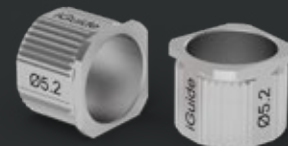
	Fully tapered (X-Design)		Apically tapered (C-Design)	
	BLX	TLX	BLC	TLC
Ø 3.3 mm			✓	✓
Ø 3.5 mm	✓			
Ø 3.75 mm	✓	✓	✓	✓
Lengths	6–14 mm			



→ Narrow T-Sleeve diameter, designed for tight interdental spaces with limited mesiodistal room.

STRAUMANN iGUIDE™ T-SLEEVE Ø 5.2 MM, HEIGHT 5 MM

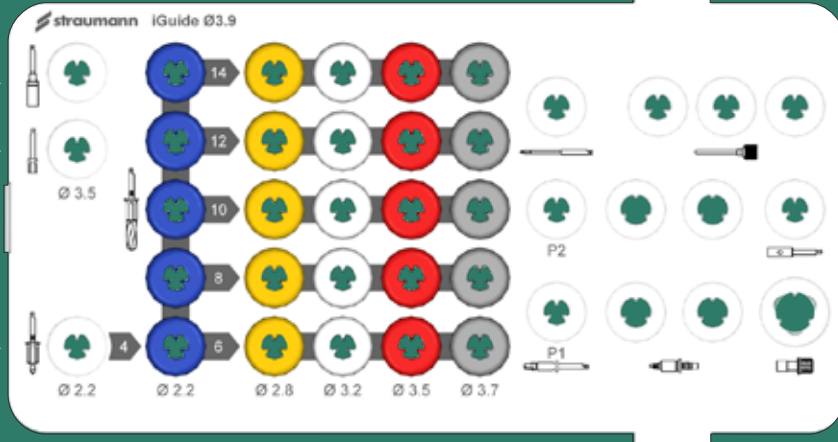
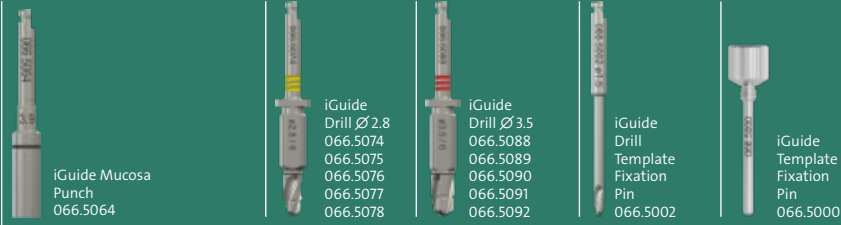
	Fully tapered (X-Design)		Apically tapered (C-Design)	
	BLX	TLX	BLC	TLC
Ø 3.3 mm			✓	✓
Ø 3.5 mm	✓			
Ø 3.75 mm	✓	✓	✓	✓
Ø 4.0 mm	✓			
Ø 4.5 mm	✓	✓	✓	✓
Ø 5.0 mm	✓			
Lengths	6–14 mm			



→ Standard T-Sleeve diameter enabling fully guided implant placement up to Ø 5 mm.

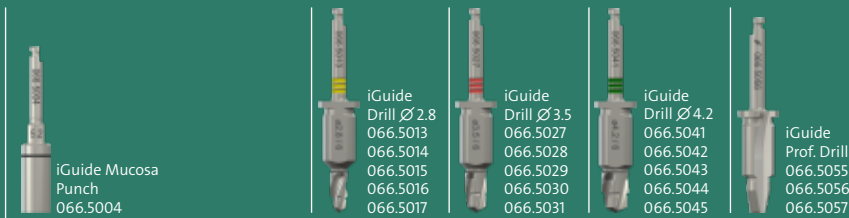
STRAUMANN iGUIDE™

Ø 3.9



STRAUMANN iGUIDE™

Ø 5.2



EXCEL WITH THE STRAUMANN® DIGITAL ECOSYSTEM FROM SINGLE UNIT TO FULL-ARCH

The Straumann® digital ecosystem your growth with a comprehensive range of seamlessly and open solutions, streamlining and upgrading your workflow for the final benefit of your patients. You can confidently rely on a single provider for all your implant procedures.

SCAN



Straumann SIRIOS™ X3

ENGAGE



Smilecloud

PLAN



coDiagnostiX®

Smile in a Box®



STRAUMANN SIRIOS™ X3

Go beyond image capturing and open the door to digital dentistry with Straumann SIRIOS™ X3; with ultimate accuracy and a revolutionary scanning performance, it is specifically designed to unlock streamlined digital workflows.

SMILECLOUD

Captivate your patients through natural biometric smile design and effectively engage your network with the potential of interdisciplinary workflows. Start today with Smilecloud!

CODIAGNOSTIX®

Unlock the potential of treatment planning with coDiagnostiX® including AI-powered data preparation, visualization and automated tooth extraction designed to efficiently access immediate treatments.



FLEXIBILITY

From single unit to edentulous cases, with our solutions you have the right tools to streamline your workflow.



PREDICTABILITY

Boost your confidence with digital treatment planning and guided procedures designed to achieve predictable results.



EFFICIENCY

Implement streamlined workflows that are designed to promote speed and quality in your treatment.



EXCELLENCE POWERED BY AI

Our solutions are infused with AI to empower you to achieve your goals with efficiency and speed.

PLACE

2ND SCAN

PRODUCE



Straumann iEXCEL™



Straumann SIRIOS™ X3



Straumann UNIQ™



Straumann EXACT™



Straumann® Anatomic Healing Abutment XC



Straumann® Variobase® XC

SMILE IN A BOX®

Outsource planning, design, and/or manufacturing and access immediate treatment protocols without requiring additional hardware and software investments.

STRAUMANN EXACT™

Straumann EXACT™ offers a fully digital, cost-effective full-arch workflow. BASE scanbodies and LINKS enable precise SRA scanning, seamlessly integrating with Straumann AXS™ for accuracy, efficiency, and flexibility without costly photogrammetry.

STRAUMANN UNIQ™*

Use a premium service to outsource the planning, design, and manufacturing of your custom implant prosthetics on demand, based on your specific needs.

* The availability varies by region; contact local team for details.

STRAUMANN iEXCEL™

UNLEASH YOUR POWER

Straumann iEXCEL™ is our ultimate Dental Performance System. Versatility of four implant designs in a single system. Simplicity of one prosthetic connection. Integrated digital workflows and services that help save your time.

* TRUE CLINICAL VERSATILITY

With four implant designs in one single instrument set, you're able to choose the right option to tackle most patient situations, even during surgery. The SLActive® surface excels even for patients who are compromised by smoking, diabetes, or radiation therapy.¹¹⁻¹³

* SIMPLICITY YOU'LL LOVE

One TorcFit™ connection for all four implant designs sharing the same connection diameter for all prosthetics. Profit from restorative simplicity with a complete range of Straumann® original stock and customized prosthetics.

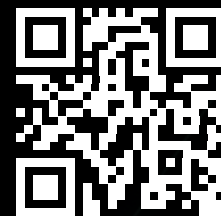
* CONNECTED DENTISTRY TO EMPOWER EXCELLENCE

Our system offers integrated digital workflows and services designed to deliver predictable, efficient and high-quality outcomes, from single to full arch indications.

84%

of clinicians who tried the Straumann iEXCEL™ system would switch to it*

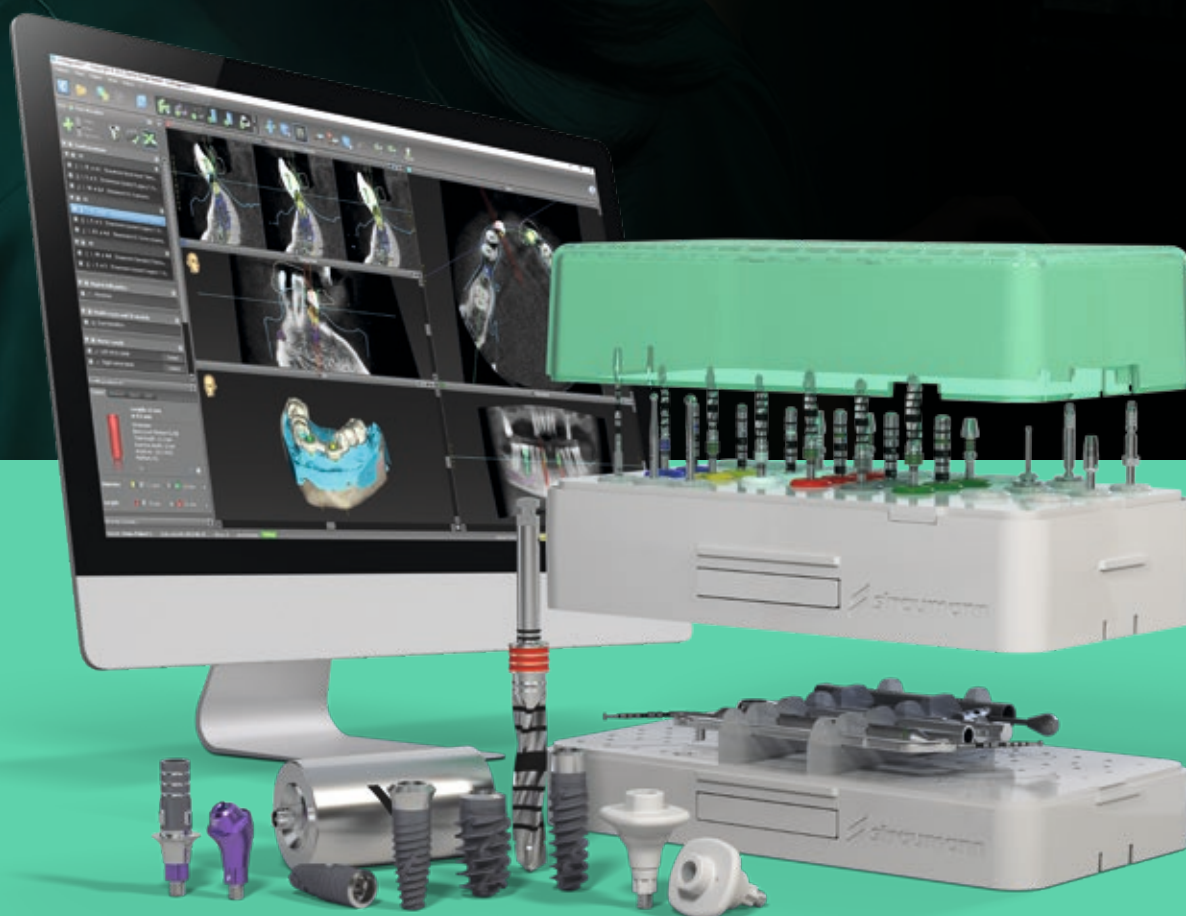
*n=50, Jan 2024, Satisfaction survey with clinicians from Europe.



Discover
Straumann iEXCEL™

"I want to create flawlessly executed work where every detail reflects my craftsmanship."

Straumann iEXCEL™ elevates precision and esthetics: four implant designs, one connection for seamless control, plus integrated digital workflows that protect detail, reduce remakes, and give you more time to perfect the finish.



CLINICAL CASES

Straumann® STARConcept™: digital full-arch rehabilitation using Straumann iGuide™ and Straumann BLX™ implants

Digital full-arch rehabilitation of the maxilla using the Straumann® STARconcept™ workflow. Digital treatment planning was performed using Smilecloud and the Straumann® Smile in a Box® service. Following tooth extraction, selected teeth were temporarily preserved to stabilize the Straumann iGuide™, enabling fully guided immediate placement of Straumann BLX™ implants. After all implants were placed, the remaining teeth were removed, screw-retained abutments were connected, and an immediate full-arch provisional restoration was delivered, providing immediate function and esthetics.



Dr. Wael Att



Dr. Florin Cofar

Straumann® Fast Molar Solution: bilateral posterior rehabilitation with Straumann iGuide™ and Straumann iEXCEL™ implants

Bilateral rehabilitation of a fractured, endodontically treated tooth #36 and an edentulous gap at site #46. Treatment followed a fully digital workflow: implants and Anatomic Healing Abutments were planned in coDiagnostiX®, patient-specific surgical guides were manufactured, and surgery was performed with Straumann iGuide™, enabling fully guided implant placement. Following extraction of #36, an immediate implant (Straumann BLC™ Roxolid® SLActive® 4.5 × 10 mm) was placed, and the residual gap was grafted with Cerabone® Plus. In the same session, the second implant (Straumann BLX™ Roxolid® SLActive® 4.5 × 10 mm) was placed at site #46.

Both sites followed the Straumann® Fast Molar Solution and Anatomic Healing Abutments XC (AHA) were placed immediately after implant placement to support soft tissue conditioning and to enable subsequent capture of implant position and emergence profile in a single scanning step, enhancing efficiency while minimizing additional soft tissue interventions.



**Dr. Christian
R. Jarry**



**Dr. Dalton
Marques**



Occlusal view of the maxilla showing the initial clinical situation with non-restorable tooth remnants



Fully guided implant placement using Straumann BLX™ SLActive® Roxolid® implants



All implants in position, secured with iGuide implant drivers, showing parallel alignment



Occlusal view showing all screw-retained abutments in place immediately after surgery



Transfer of the provisional restoration embedded in the prosthetic guide "cage"



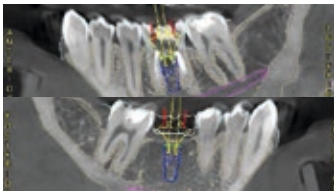
"Cage" in the planned position, ready for intraoral connection of temporary cylinders and provisional bridge



Immediate provisional prosthesis demonstrating optimal esthetics



Postoperative radiograph showing stable implant positioning and provisional restoration



coDiagnostiX®, implant and AHA planning and iGuide design for sites #36 and #46



Straumann iGuide™ surgical template fitting on lower arch



Fully guided implant bed preparation, following predefined protocol



Secured implant on Straumann iGuide™ implant driver for fully guided placement



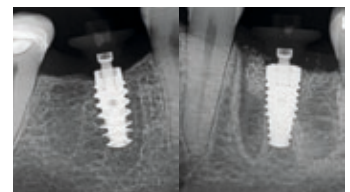
Drive the implant until the physical stop of the implant driver reaches the T-sleeve



Immediate placement of Straumann BLC™ #36 and placement of Straumann BLX™ #46

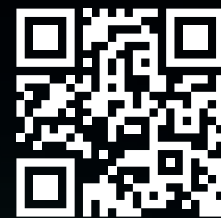


Final surgical outcome with Straumann® AHA in place



Postoperative radiographs #36 and #46 confirming correct implant and AHA positioning

STRAUMANN iGUIDE™ CONFIDENCE THROUGH GUIDANCE.



Discover
Straumann iGuide™

REFERENCES

1 Abdelhay N, Prasad S, Gibson MP. Failure rates associated with guided versus non-guided dental implant placement: a systematic review and meta-analysis. *BDJ Open*. 2021 Aug 18;7(1):31. 2 Shi Y, Wang J, Ma C, Shen J, Dong X, Lin D. A systematic review of the accuracy of digital surgical guides for dental implantation. *Int J Implant Dent*. 2023 Oct 25;9(1):38. 3 Gargallo-Albiol J, Barootchi S, Marqués-Guasch J, Wang HL. Fully Guided Versus Half-Guided and Freehand Implant Placement: Systematic Review and Meta-analysis. *Int J Oral Maxillofac Implants*. 2020 Nov/Dec;35(6):1159-1169. 4 Tattan M, Chambrone L, González-Martín O, Avila-Ortiz G. Static computer-aided, partially guided, and free-handed implant placement: A systematic review and meta-analysis of randomized controlled trials. *Clin Oral Implants Res*. 2020 Oct;31(10):889-916. 5 Romandini M, Ruales-Carrera E, Sadilina S, Hämmerle CHF, Sanz M. Minimal invasiveness at dental implant placement: A systematic review with meta-analyses on flapless fully guided surgery. *Periodontol 2000*. 2023 Feb;91(1):89-112. 6 Heng S, Arunjaroenusuk S, Pozzi A, Damrongsiriat N, Pimkhaokham A, Mattheos N. Comparing Medium to Long Term Esthetic, Clinical, and Patient Reported Outcomes Between Freehand and Computer Assisted Dental Imp. 7 Sindhusa BV, Rajasekar A. A short review on guided implant surgery and its efficiency. *Bioinformation*. 2022 Sep 30;18(9):764-767. 8 iGuide Surgical Protocol Validation (DEV 0049139), data on file. 9 Ultrasonic cleaning machine, washer-disinfector, steam sterilizer, autoclave. 10 Compared to manual reprocessing. 11 Ioannidis A, Gallucci GO, Jung RE, Borzangy S, Hämmerle CH, Benic GI. Titanium-zirconium narrow-diameter versus titanium regular diameter implants for anterior and premolar single crowns: 3-year results of a randomized controlled clinical study. *J Clin Periodontol*. 2015 Nov;42(11):1060-70. doi: 10.1111/jcpe.12468. Epub 2015 Nov 14. 12 Al-Nawas B, Domagala P, Fragola G, Freiburger P, Ortiz-Vigón A, Rousseau P, Tondela J. A Prospective Noninterventional Study to Evaluate Survival and Success of Reduced Diameter Implants Made From Titanium-Zirconium Alloy. *J Oral Implantol*. 2015 Aug;41(4):e118-25. doi: 10.1563/AAID-JOI-D-13-00149. Epub 2014 Mar 25. 13 Altuna P, Lucas-Taulé E, Gargallo-Albiol J, Figueras-Álvarez O, Hernández-Alfaro F, Nart J. Clinical evidence on titanium-zirconium dental implants: a systematic review and meta-analysis. *Int J Oral Maxillofac Surg*. 2016 Jul;45(7):842-50. doi: 10.1016/j.ijom.2016.01.004. Epub 2016 Feb 3.



International Headquarters

Institut Straumann AG
Peter Merian-Weg 12
CH-4002 Basel, Switzerland
Phone +41 (0)61 965 11 11
Fax +41 (0)61 965 11 01
www.straumann.com

© Institut Straumann AG, 2026. All rights reserved.

Straumann® and/or other trademarks and logos from Straumann® mentioned herein are the trademarks or registered trademarks of Straumann Holding AG and/or its affiliates.

iEXCEL 
STRAUMANN® PERFORMANCE SYSTEM

 **straumann**