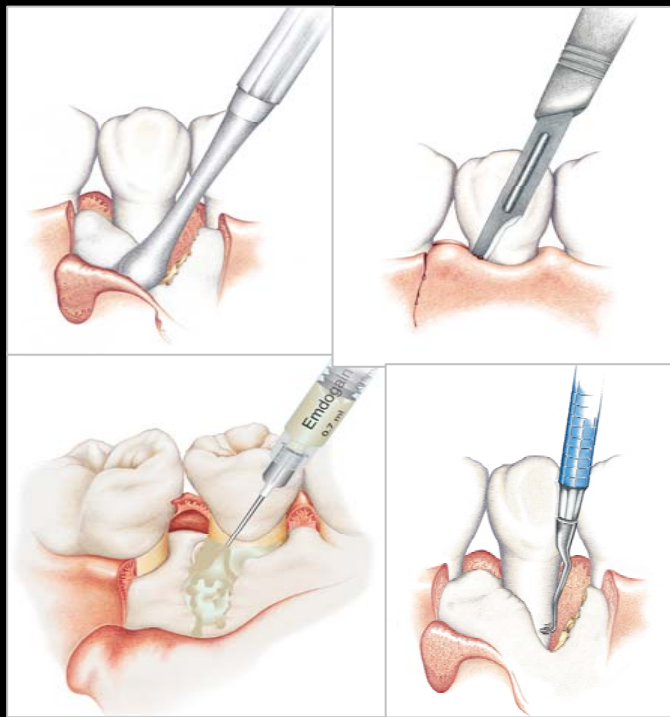


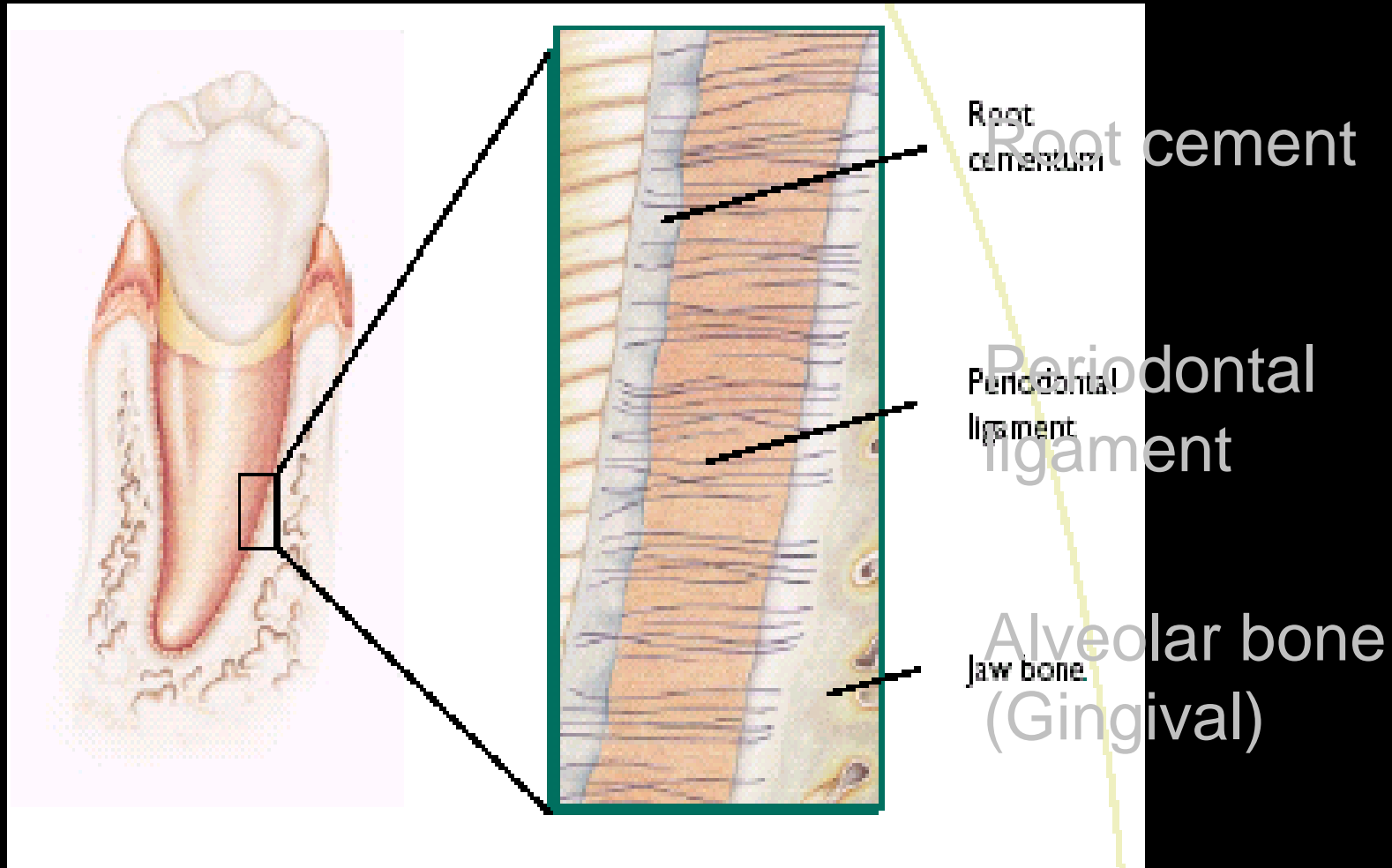
Emdogain®



Surgical
Procedure



Treatment with Emdogain®



Pre Surgical procedure

Careful patient selection:

Oral hygiene, smoking etc.

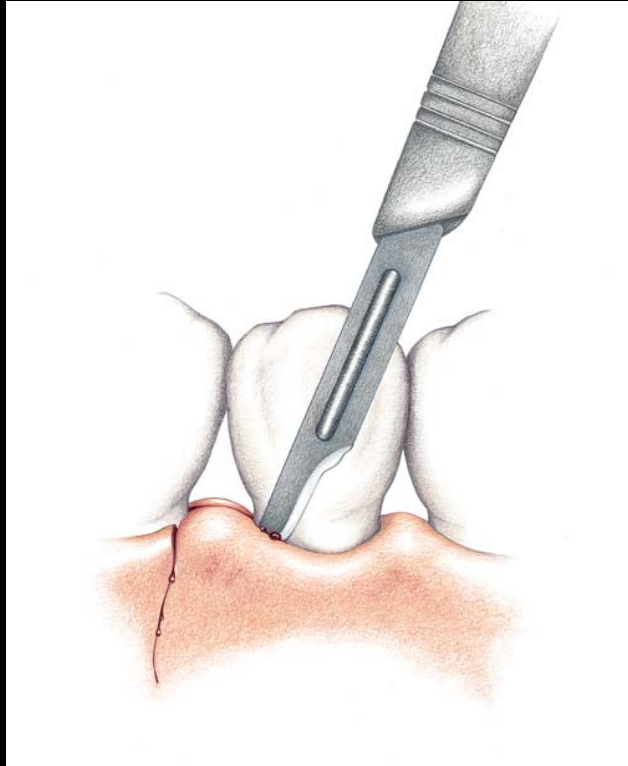
- Cleaning, scaling, reducing degree of inflammation
- Follow up after 2-3 month, measurement of PD, tooth stability
 - Periodontal disease has to be eliminated

Surgical procedure

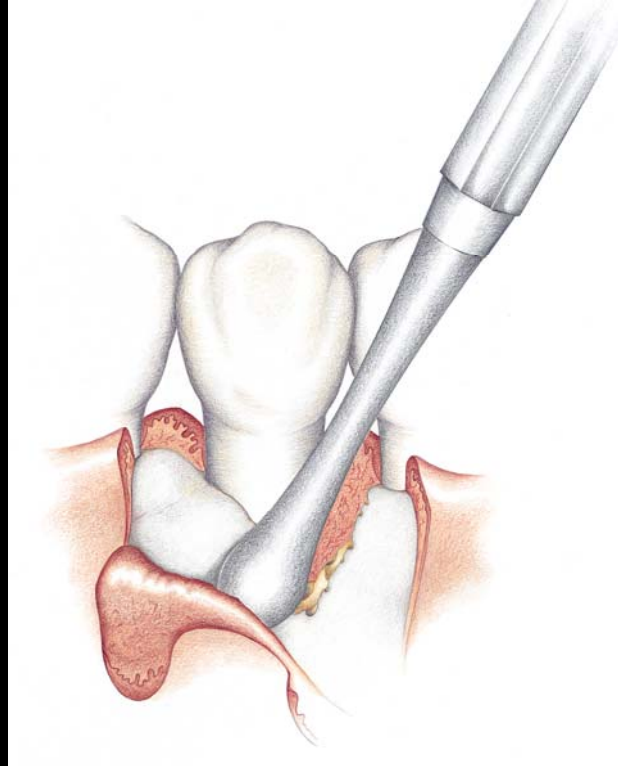
- Remove any remaining plaque and/or calculus as well as blood from root surfaces exposed during periodontal surgery
- Apply PrefGel™ onto exposed root surfaces for 2 minutes
- Rinse thoroughly with sterile saline
- Avoid recontamination of the conditioned root surfaces after the final rinse and prior to treatment with Emdogain®



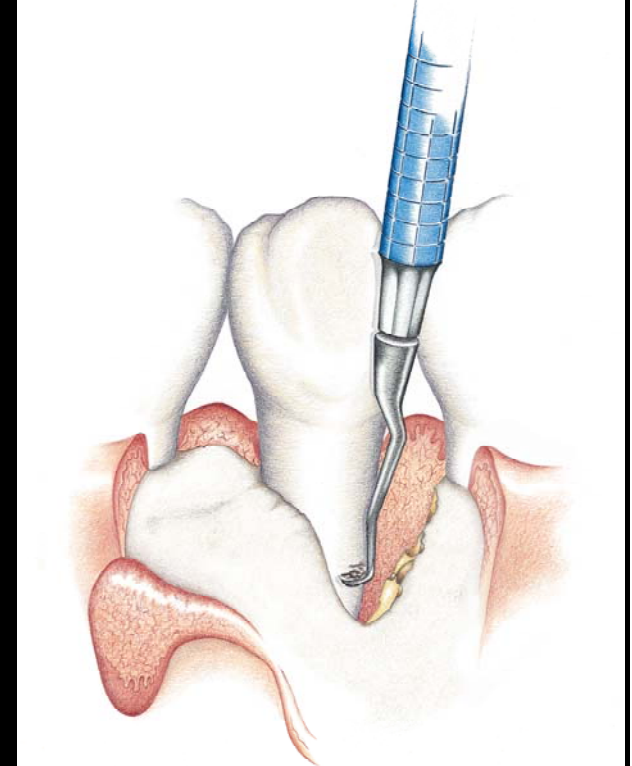
Surgical procedure



incision



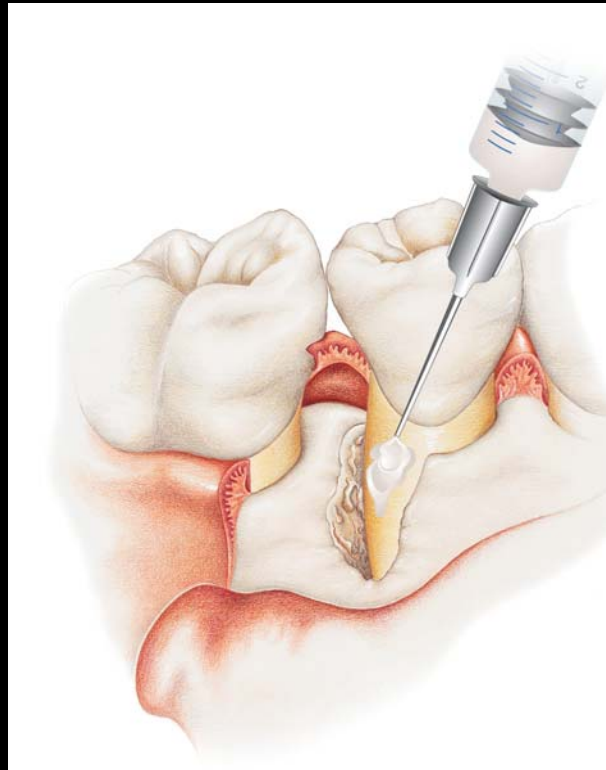
flap elevation



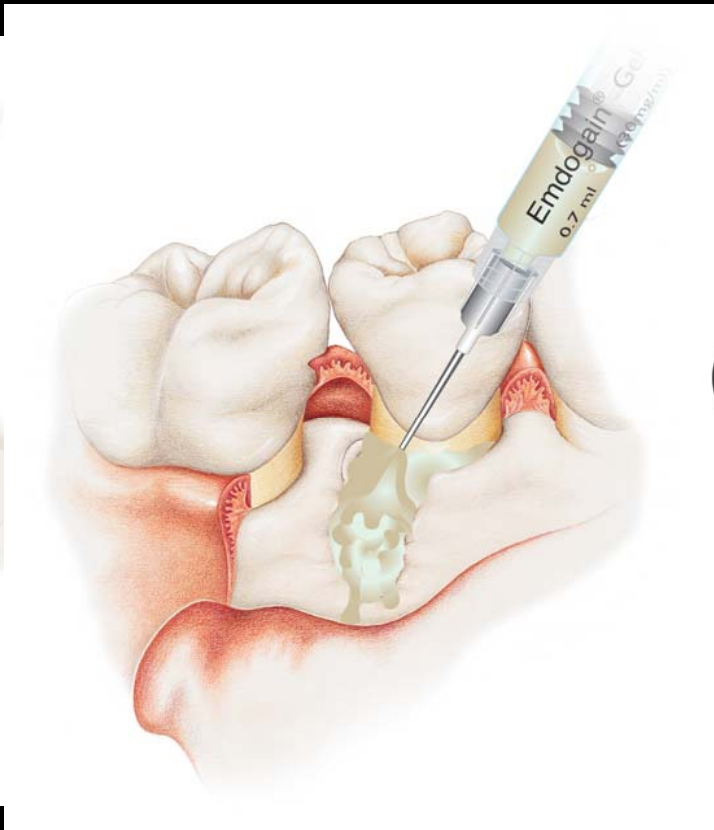
scaling, root planing



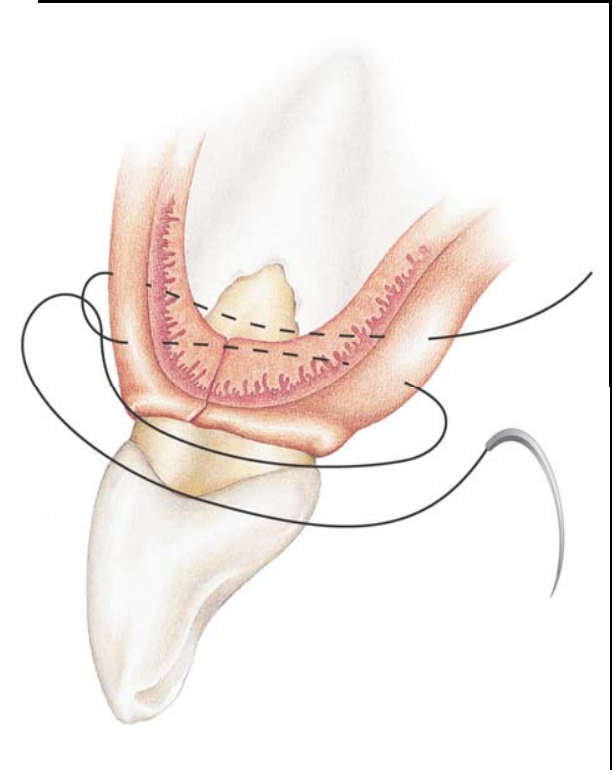
Surgical procedure



conditioning



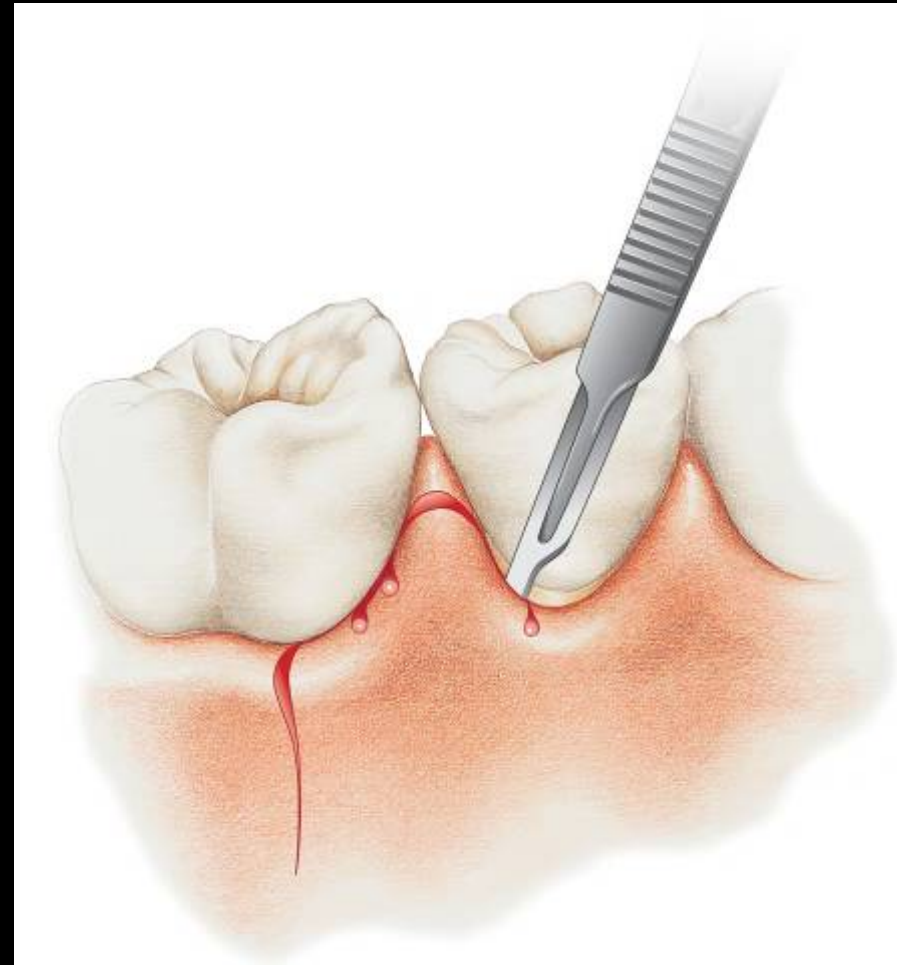
application



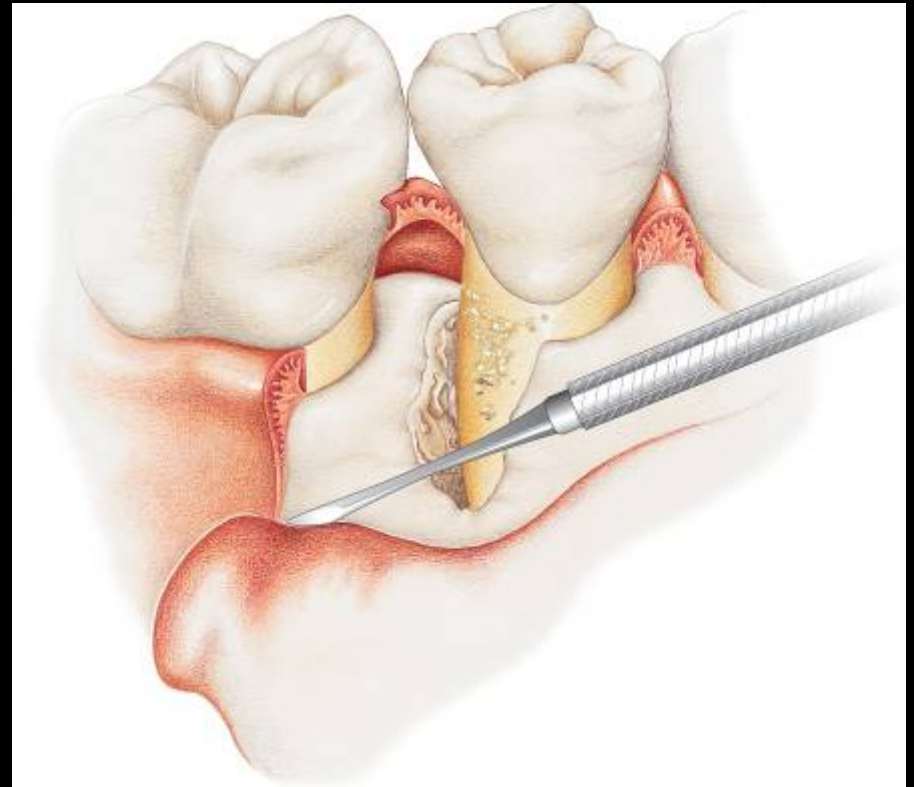
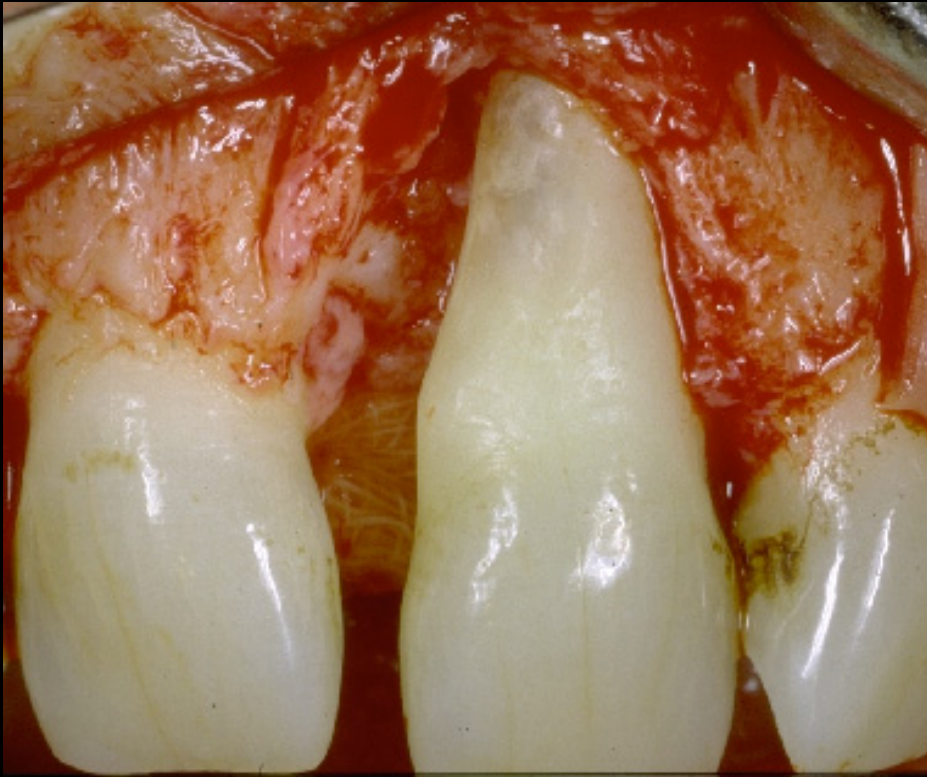
suturing



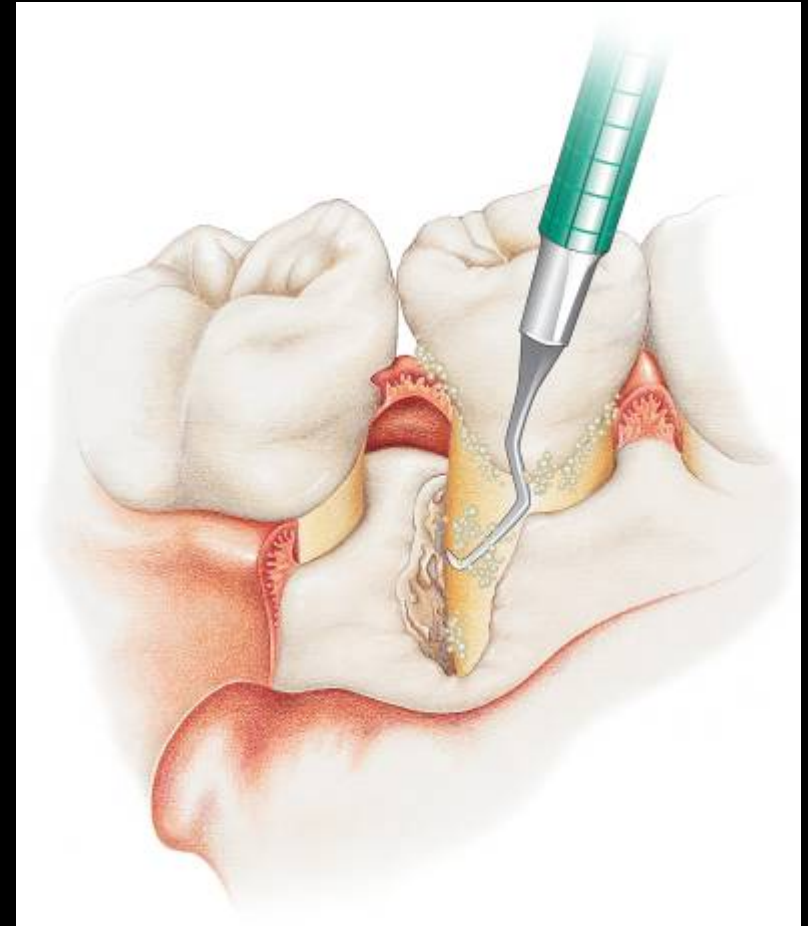
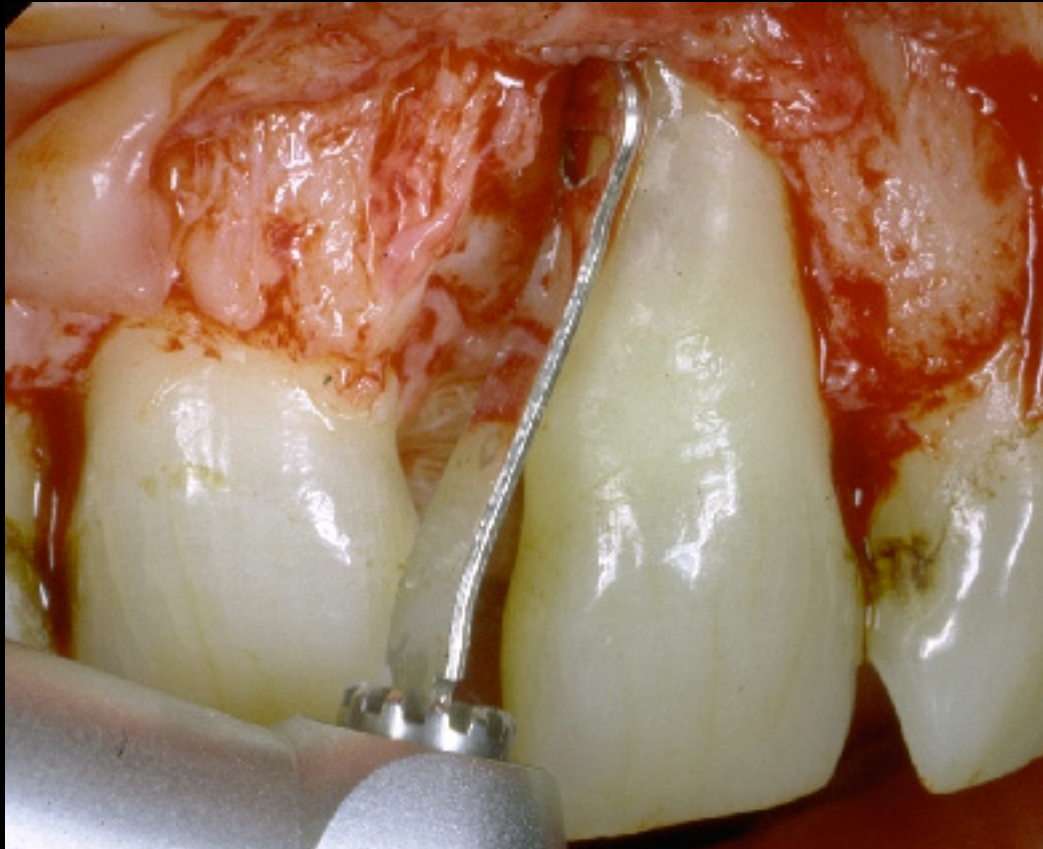
A small access flap, just large enough for instrumentation and good view



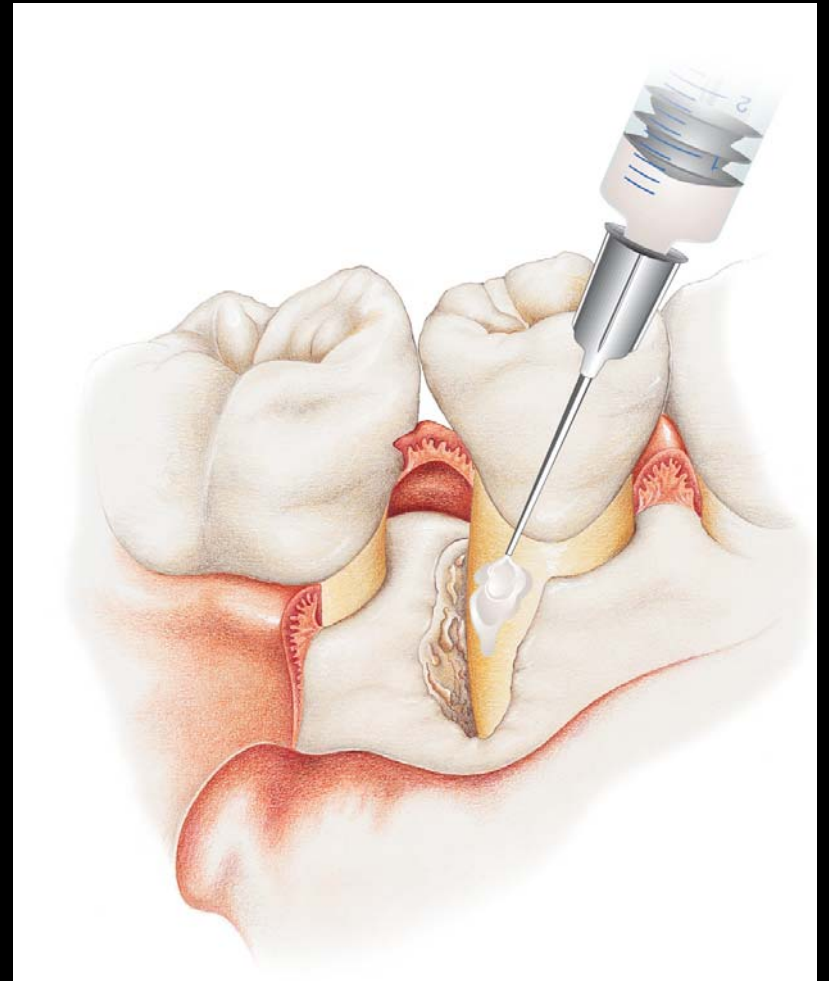
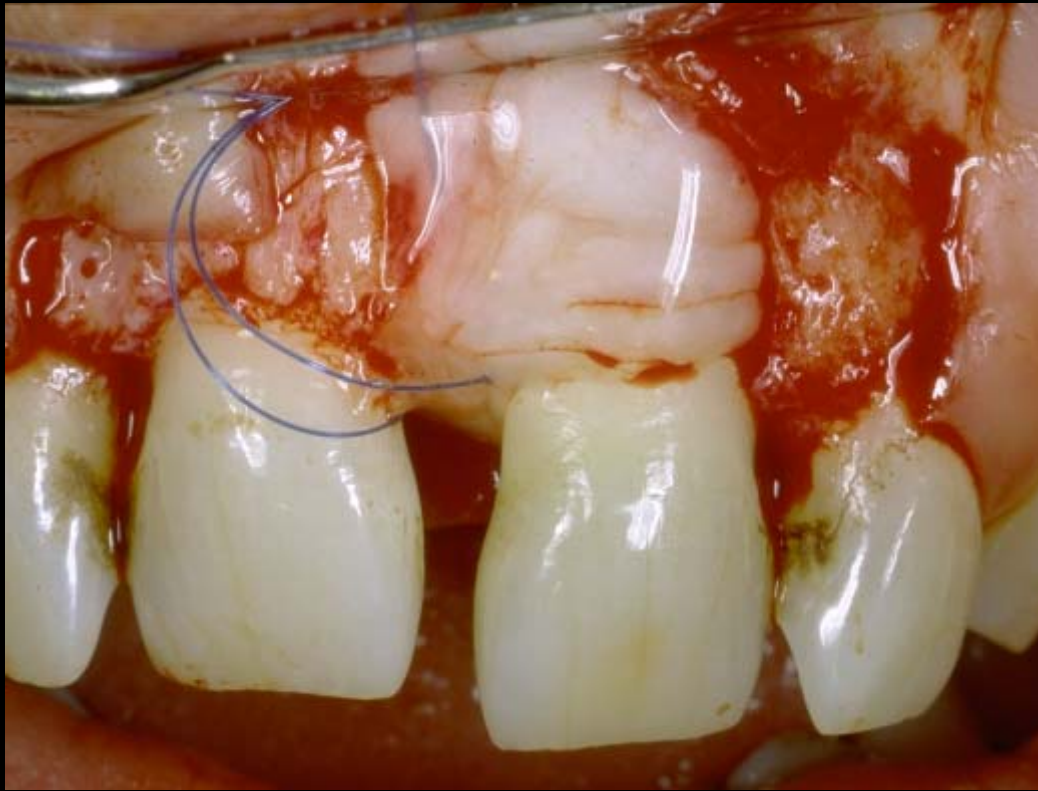
Reflection of soft tissues to expose periodontal defect



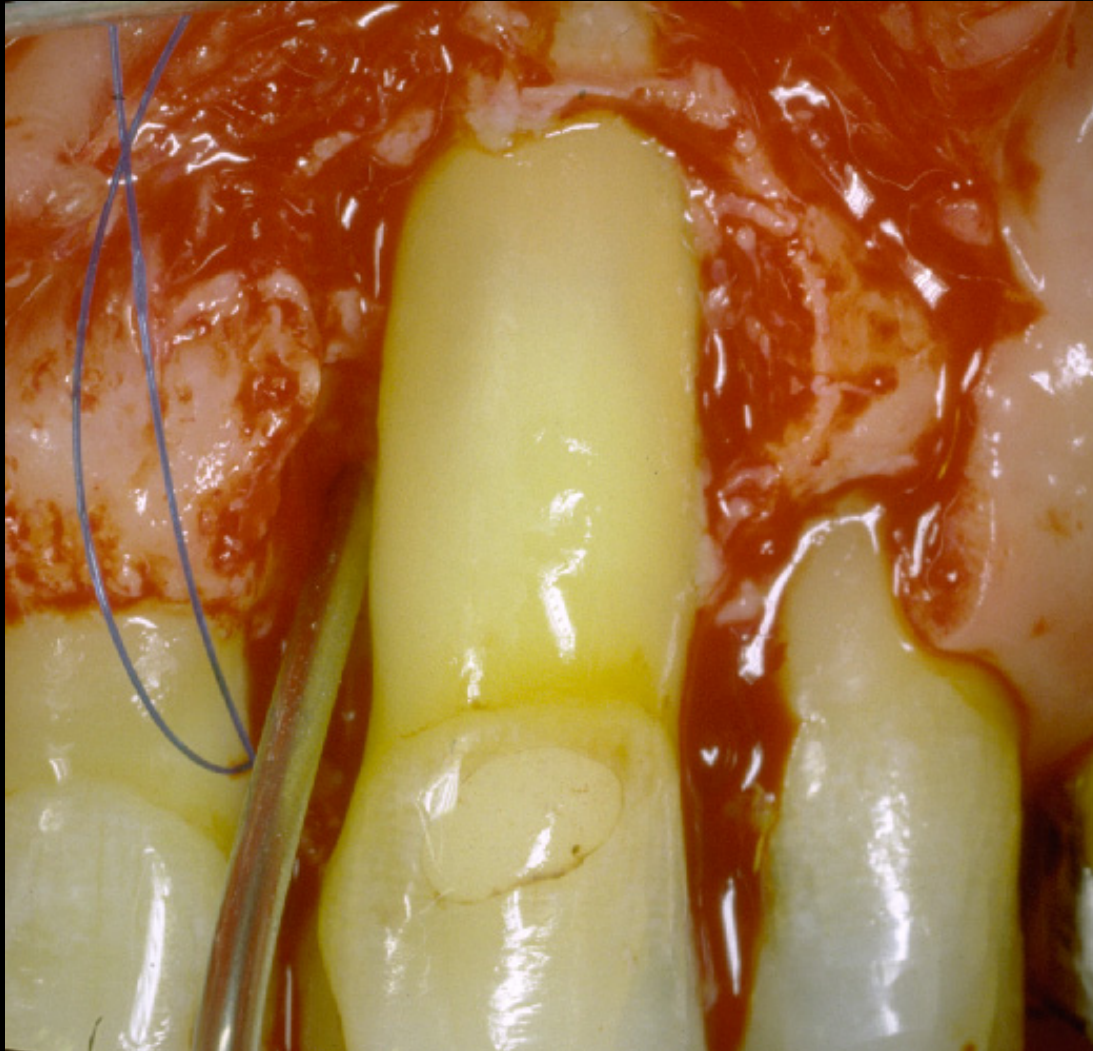
Final debridement of root surface



Root surface conditioning with PrefGel™



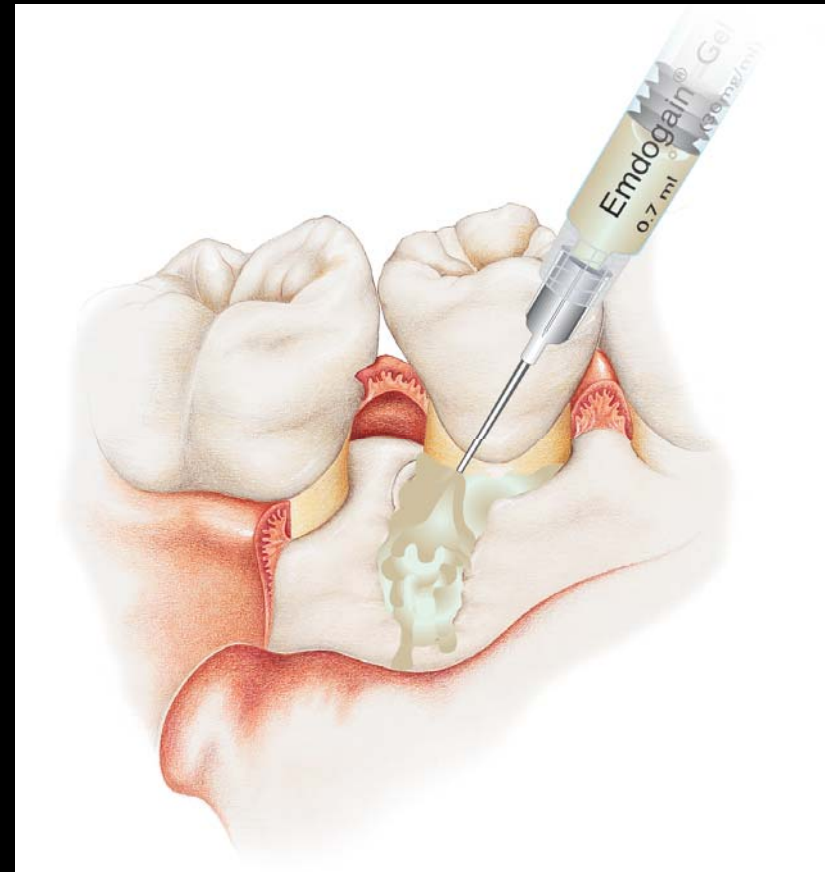
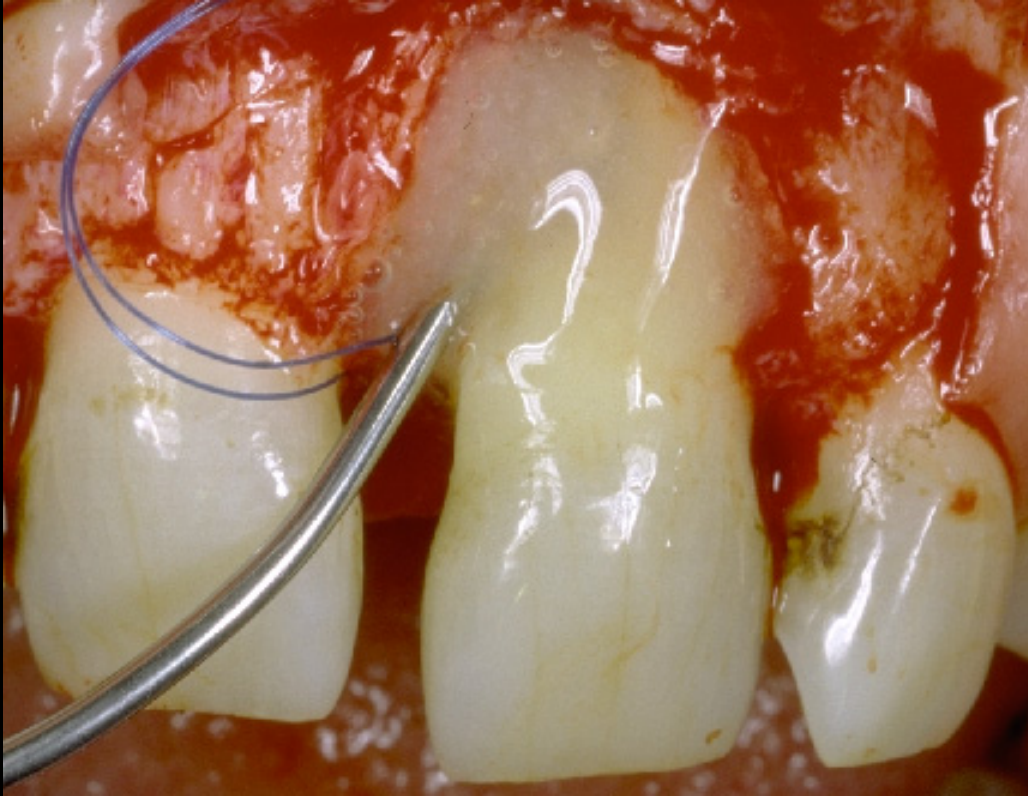
Rinsing with sterile saline



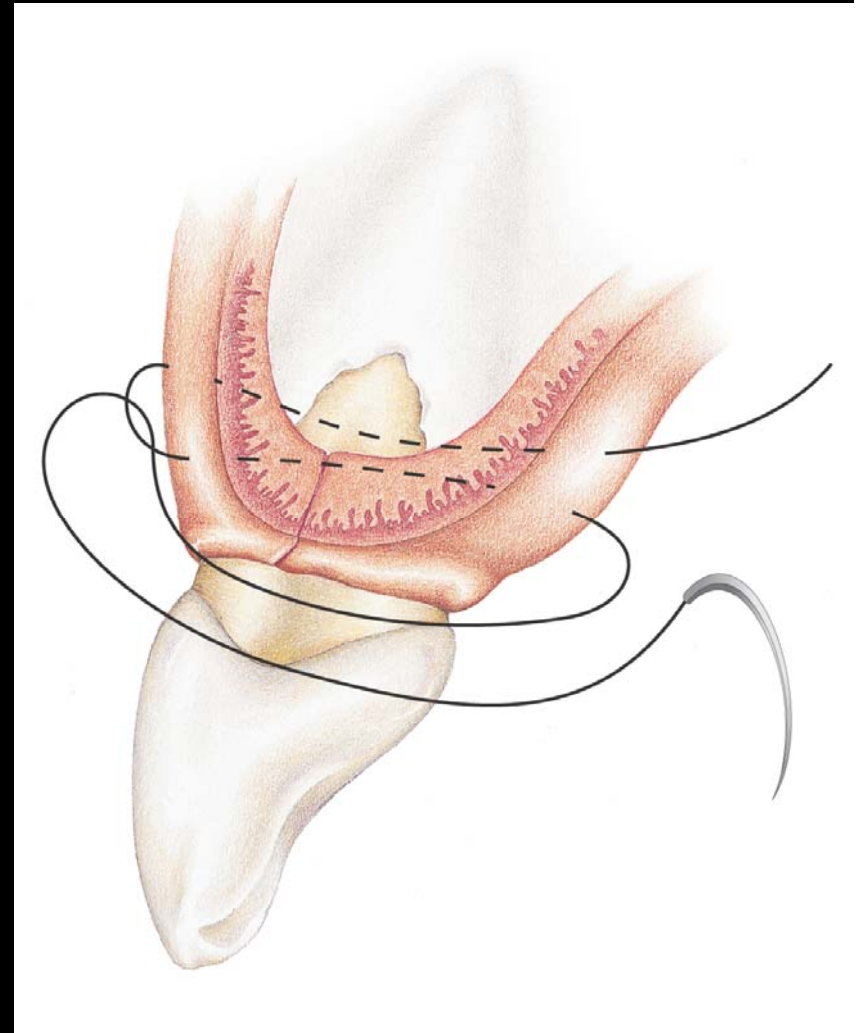
**Maintain surface
free of blood
and / or saliva**



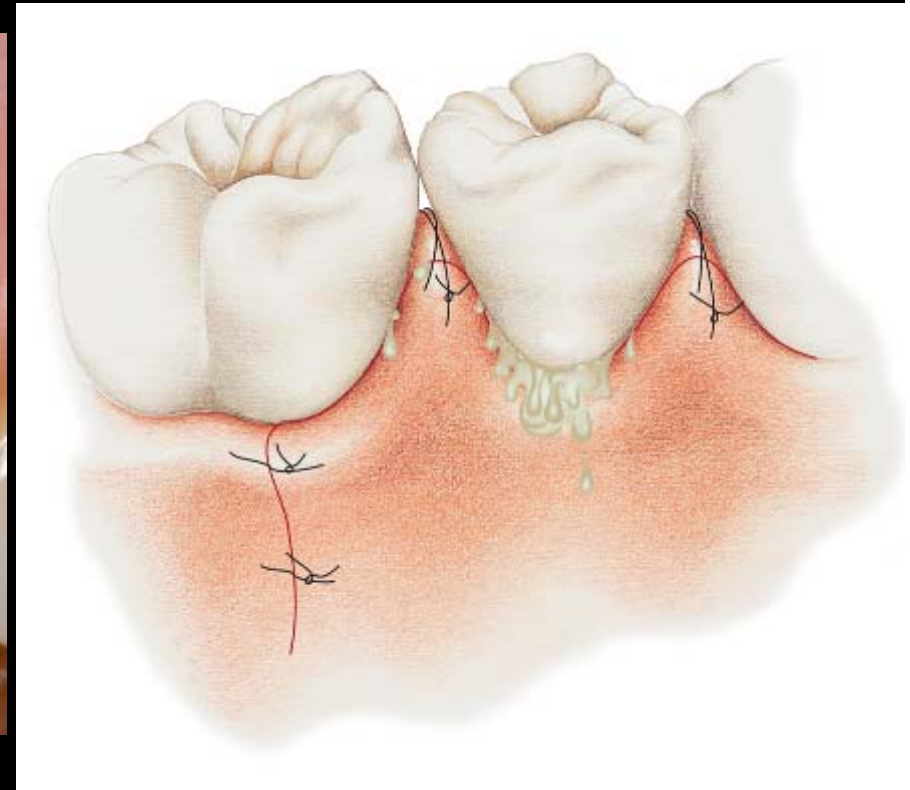
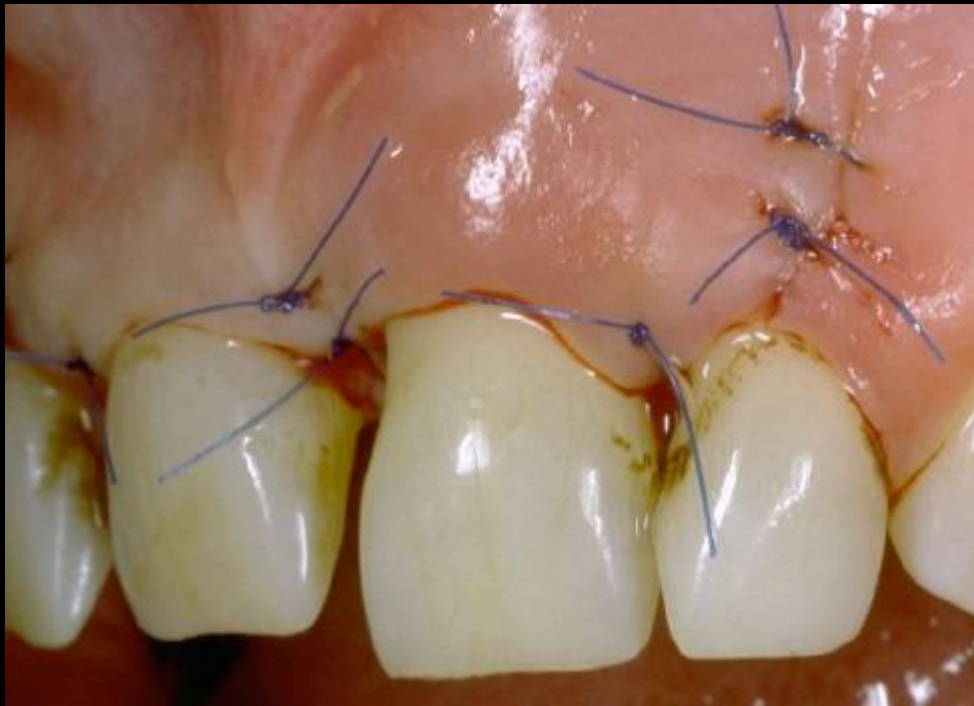
Application of Emdogain®



Modified mattress suture



Soft tissues replaced in preoperative position and sutured



Postsurgical follow-up/maintenance

Day of operation:

- Start rinsing with chlorhexidine solution (0.2-0.12%)
- Refrain from/minimize smoking
- Do not brush the area of the operation
- Avoid hard and crispy food
- (Antibiotics, if deemed appropriate based on the
- clinician's judgement)

Wound stability & infection control



Postsurgical follow-up/maintenance

Week 1 postsurgery:

- Removal of sutures which no longer add to the stability of the healing wound
- “Professional tooth cleaning” as needed
- Continue to rinse with chlorhexidine solution (or to apply chlorhexidine gel locally in the operated area)



Postsurgical follow-up/maintenance

2 - 6 weeks postsurgery:

- Removal of any remaining sutures
- “Professional tooth cleaning” as needed
- Continue to rinse with chlorhexidine solution (or to apply chlorhexidine gel locally in the operated area)
- Week 4 start careful toothbrushing in the operated area on buccal/lingual surfaces, but not interproximally



Postsurgical follow-up/maintenance

6 weeks postsurgery:

- Stop rinsing with chlorhexidine
- “Professional tooth cleaning” as needed
- Start interproximal tooth cleaning in the operated area
- Fluoride application as needed
- Decide on subsequent (individual) recall schedule



Postsurgical follow-up/maintenance

6 to 12 months

- Adequate tooth cleaning in the operated area
- Decide on subsequent (individual) recall schedule
- x-rays at 12 months



Postsurgical follow-up

- **No** probing before 6 months !
- Follow-up radiographs at
12 and 24 months
- Individual recall program

